

HOME FRONT NEWS

Volume 12 Issue 1
October, 2011

A monthly publication of Brevard Christian Home Educators, Inc.



BCHE Inc.

P.O. Box 540067

Merritt Island, FL 32954-0067

454-2445

October



FINALLY, MY BRETHREN, BE STRONG IN THE LORD, AND IN THE POWER OF HIS MIGHT. PUT ON THE WHOLE ARMOUR OF GOD, THAT YE MAY BE ABLE TO STAND AGAINST THE WILES OF THE DEVIL. EPHESIANS 6:10-11



Rene Hunt, Administrator

Office Phone: 454-2445

E-mail: christianheritageacademy@hotmail.com

CHA Monthly Reports

As a reminder, your monthly reports are to be postmarked by the 7th of each month. If there is a situation that keeps you from getting the report in on time.

Please call the CHA office and leave a message.

Thank you for your cooperation.

ATTENTION CHRISTIAN HERITAGE ACADEMY- HIGH SCHOOL STUDENTS

If you are in need of a BCC dual enrollment form for the Spring semester come by the office on Sat. Oct. 8th, between 12 and 4 pm.

The first day for BCC dual enrollment registration is Oct. 10th.

Please try hard to get to this scheduled time as it is very time consuming for Rene to meet individually with people.

If you have any questions feel free to call the office # 454-2445

Thank you,

Janet Jackson

Treasurer and Rene's faithful assistant :)

North Area (Titusville, Mims, Port St. John)

Area Representative:
Annie Venable
annieven@earthlink.net

Central Area (Cocoa, Merritt Island,
Rockledge)

Area Representative :
Jennifer McDowell
alphauniforms@netzero.net

South Area (Melbourne, Palm Bay)

Area Representative:

Vacant

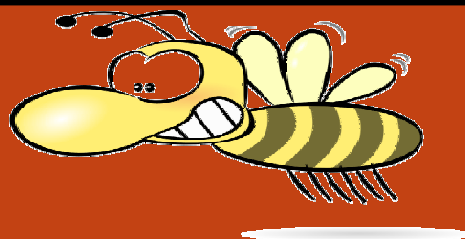
Please send Newsletter
submissions to:

bchehomeschool@hotmail.com

As we begin this new school year my prayer is that it will be a year filled with spiritual growth and great learning experiences for us and for our children in a Christ Centered atmosphere. I pray for our family relationships, that we grow in unity, and that we as a group will support and encourage one another in our homeschooling journey. Together, we can accomplish more, and while service within the group is not a requirement, the success of the group depends upon the amount of participation and dedication of each member. Looking forward to seeing you all and listening to your ideas and words of support and encouragement.

God Bless you and your children in the 2011-2012
School Year!!!

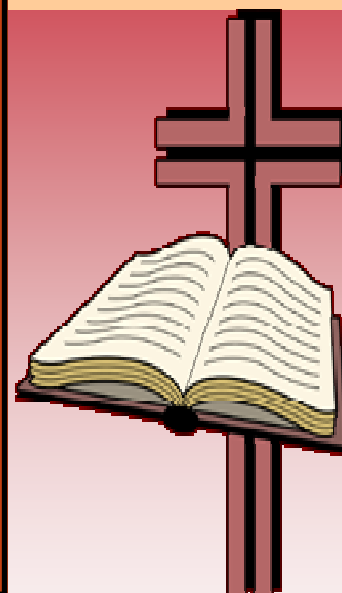
SPELLING BEE



BCHE will be holding The Annual Spelling Bee and the exact date is to be announced.

Please email

bchehomeschool@hotmail.com or call 454-2445 and leave a message if you would like to help organize this event.



TUESDAY NIGHT SUPPORT GROUP MEETING

October 11th at 6:30PM

Rockledge Country Club

Contact Jennifer McDowell for more info

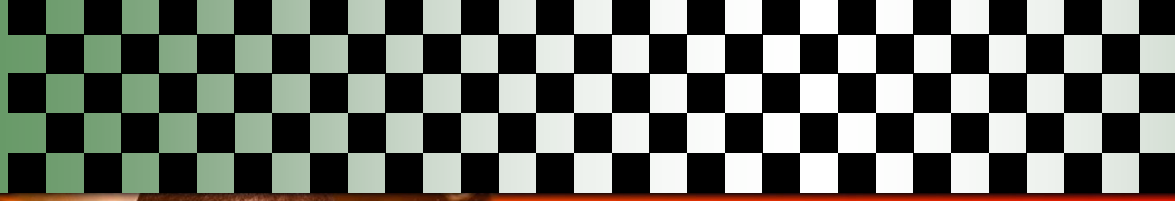
BCHE Families

Those of you who joined FPEA (Florida Parent Educators Association) with us this year should be receiving an email from them with a profile request.

FPEA is doing things a little different this year in that we have to register on line. It actually made it easier for me but one more step for each individual family.

Go to the link they gave you and edit your profile and you should receive the membership cards, almanac, and be able to register for the big May convention.

If you have any questions or if you signed up for FPEA and didn't get an email contact me at jackson8family@cfl.rr.com



Brevard County Youth & Health Blast Concert



Space Coast State Fair @ Sand Point Park
Titusville, FL

Thursday November 10, 2011

5pm - 11pm

FREE Concerts FREE Unlimited Rides Great Food

\$ ONLY 10.
Admission

- Youth Group Bus Parking
- Be a Part by having a Display or Ad
- Mentor County Youth

Order tickets NOW online @ www.LIFEVISUAL.com

As a service to our members, BCHE maintains its own Yahoo group. This group exists primarily to help foster a sense of community among members. It is a place where we can freely share information and discuss topics relevant to homeschooling such as items for sale/looking for, field trips, curriculum advice, etc. Members are also free to post prayer requests or other personal words of encouragement. (Forwards are HIGHLY discouraged since many of us regard them as spam and don't have time to read them.) When you join BCHE you are NOT automatically added to the Yahoo group. You must request membership in this separately.

Personally, it's my desire that every BCHE member would consider joining the Yahoo group this year. It's a fairly new addition and has been underutilized in the past but could be a great resource for us all. If e-mail volume is a concern for you, just click on the "daily digest" when you join. That way, even if there are multiple posts in a single day, you will only receive ONE e-mail that contains all of the posts in a single message. In order to join go to www.yahogroups.com and enter "Brevard Christian Home Educators" where it says "find a group". Then click on "Request to join". The only criterion for membership is that you are a current BCHE member. As soon as your membership is verified, I'll add you to the group. (If you request membership and for some reason are NOT added within two days, or if you have any other questions, please e-mail me at annieven@earthlink.net)

If you choose NOT to join the Yahoo group you will still receive the monthly newsletter and other announcements from the communications director. The biggest difference is that when a member sends something to the communications director for broadcast, the entire group (BCHE/CHA) WILL receive it but there will generally (necessarily) be a delay. The Yahoo postings are instantaneous and it is therefore a faster, less formal means of communication.

Blessings, Annie Venable (BCHE Yahoo group moderator)

*** SPECIAL MEETING ***

Space Coast Creation Club October Meeting

Join us on a field trip to Daytona to hear
**Dr. Robert Carter, of Creation Ministries Intl, speak on
Creation and Mitochondrial Eve and the Three
Daughters of Noah.**

When: Tuesday, October 11, 2011

*Where: meet at Central Brevard Library in Cocoa to caravan
to Crossroads Baptist Church in Daytona (directions below)
Time: meet at 4:30pm to leave by 4:45pm (you are welcome to
travel independently)*

Presentation is from 6:00 to 9:00pm

**Be sure to join us. All invited. Call Alfred Menendez at
639-4391 for more information.**

Please email us with any questions at: Spacecoastcreationclub@yahoo.com

For more information see our website: Spacecoastcreationclub.org

All people young and old are invited to join us in learning about God's Creation at the Space Coast Creation Club meeting. Come and learn how to defend your faith by using God's Word along with the evidences of God's Creation.

Directions

CrossRoads Baptist Church

1851 South Clyde Morris Blvd. Daytona Beach FL, 32119

Phone 386-760-4806

Directions from I-95

**From I-95 take exit #260 east which becomes Beville Rd.
(also called Hwy. 400). At your second traffic light, turn right
onto Clyde Morris Blvd. We are only 8/10 of a mile on your
left, next to the Colonial Bank. Driving time is less than 5
minutes from I-95.**

October

SUNDAY	MONDAY	TUESDAY	WEDNESDAY	THURSDAY	FRIDAY	SATURDAY
						1
2	3	4	5	6	7 CHA Monthly Re- ports Due	8 Dual Enroll Form Pick up 12-4
9	10	11 Central Support Meeting 6:30	12 PSAT Testing	13	14 Campus Crusade Field Trip	15
16	17	18	19	20	21	22
23	24	25	26	27	28	29
30	31					

November

SUNDAY	MONDAY	TUESDAY	WEDNESDAY	THURSDAY	FRIDAY	SATURDAY
		1	2	3	4	5
6	7 CHA Monthly Re- port Due	8	9	10	11 Veterans Outreach Day	12
13	14	15	16	17	18	19
20	21	22	23	24	25	26
27	28	29	30			

Mary Ann Frederick, a certified USPTA tennis instructor, is offering group tennis lessons on Friday Mornings at Kars Park in Merritt Island. My kids have participated in these classes for years, and they have been a highlight of our homeschooling experience. Mary Ann is a positive, encouraging teacher who is able to keep the kids engaged for the whole hour by doing fast paced games, drills, and mini matches. Even though it is a group lesson, Mary Ann is great at keeping everyone busy. VERY minimal time is spent waiting in line, etc. (Mary Ann lives in Titusville, and also works for North Brevard Parks and Rec teaching tennis summer camps and other programs.) She would like to begin classes in September.

There are generally two classes, (depending on enrollment) Last year the division was:

9:00-10:00 - Beginners / Advanced beginners children and teens
10:00-11:00- Intermediate – advanced pre-teens, teens/adults (lots of parents enjoy this class :))

The cost is \$ 7.00 a week per person

As an aside, KARS Park also offers a great place for the kids to play together when it's not their turn for class, They can go to the playground (also great for younger siblings!), watch dolphins and manatees, play volleyball, practice on the other tennis courts, walk to the camp store, etc.

You do NOT have to have a KARS park pass to attend these classes. For more information, or to register, please e-mail Mary Ann directly. Her e-mail is fredmad@bellsouth.net

BCHE Members

I'm looking for a new picture to post on the website.

My son thought it was fun to see himself on our website and I thought someone else might get a kick out of it.

Soooo... send me your photo!

Keep checking the website, brevardchristianhomeschool.com

We'll put a new photo up each week.

Janet Jackson

jackson8family@cfl.rr.com



Board of Directors

Chairman—Rita Mitchell	star32926@gmail.com
Vice Chairman—Wendy Montgomery	wenracer@bellsouth.net
Secretary—Melissa Murrish	dgm5@bellsouth.net
Treasurer—Janet Jackson	jackson8@bellsouth.net
CHA Administrator—Rene Hunt	nayhunt7@hotmail.com
Communication Director—Kathy Coe	halibut@ofishial.com
Member at Large-Carol Chambers	satudayplace@bellsouth.net
North Area Rep- Annie Venable	annieven@earthlink.net
Central Area Rep-Jennifer McDowell	alphauniforms@netzero.net
South Area Rep—Vacant	